

CHANNELS

These products are single Round or Fancy Stones without foiling that are fitted with a metal ring around the girdle of the stone. This gives the channels their typical feature: the wearer is able to look “through” the Round or Fancy Stones.

Article Explanation - Base Item Number <<<

57 700 Round



5	7	7	00
Product category	Stone code (type of stone used)	Setting code	Number of stones in the setting (always 2-digit code)
5 Channels	2 Heart 3 Navette 5 Oval 7 Round	2 Heart 3 Navette 5 Oval 7 Round	00

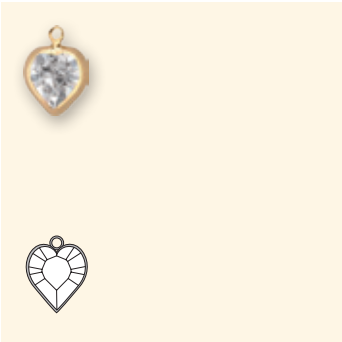
Ordering Example & Product Variety Explanation <<<

1	57 700	P32	TB	O
Material type	Base item number	Stone size	Ring configuration	Back configuration
All Channels come in brass unless Sterling is requested. Please consult your customer service representative for special orders.		3-digit code from respective product matrix	1T 1 Ring/Top TB 2 Rings/Top & Bottom	O Open
1 Brass 2 Sterling				

F1	3	1128	542
Stone pattern	Plating	Base item art. no.	Color of crystal
F1 Crystal/color/effect	Can be added at an additional charge. Z No Plating G Gun Metal Plating* S Sterling Silver* 3 Gold* * Anti nickel allergenic	1122 1128 4128 4228 4884	Please see the respective color chart at the beginning of this chapter for all available code references.

Not all configurations are available for all articles. Please refer to the respective product matrix for available combinations.

52 200 Heart



8.8x8 mm

Stone Size		Ring Configuration		Back Configuration		Stone Art. No.
Code	Description	Code	Description	Code	Description	4884
08M	8.8x8 mm	1T	1R, Top	O	Open	

Ring Configuration	Back Configuration
	
1T	Open

53 300 Navette

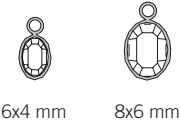


10x5 mm

Stone Size		Ring Configuration		Back Configuration		Stone Art. No.
Code	Description	Code	Description	Code	Description	4228
10M	10x5 mm	1T	1R, Top	O	Open	
10M	10x5 mm	TB	2R, Top/Bottom	O	Open	

Ring Configuration	Back Configuration
	
1T TB	Open

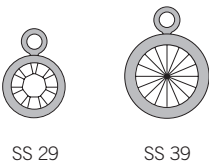
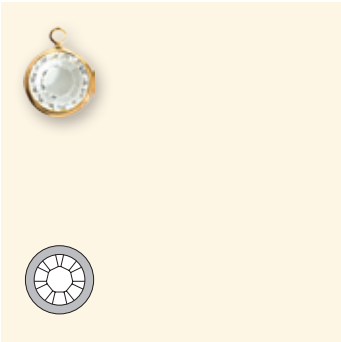
55 500 Oval



Stone Size		Ring Configuration		Back Configuration		Stone Art. No.	
Code	Description	Code	Description	Code	Description		
06M	6x4 mm	1T	1R, Top	0	Open	4128	
06M	6x4 mm	TB	2R, Top/Bottom	0	Open		
08M	8x6 mm	1T	1R, Top	0	Open		
08M	8x6 mm	TB	2R, Top/Bottom	0	Open		

Ring Configuration		Back Configuration	
1T	TB	Open	

57 700 Round



Stone Size		Ring Configuration		Back Configuration		Stone Art. No.	
Code	Description	Code	Description	Code	Description		
S29	SS 29	1T	1R, Top	0	Open	1122	1128
S29	SS 29	TB	2R, Top/Bottom	0	Open		
S39	SS 39	1T	1R, Top	0	Open		
S39	SS 39	TB	2R, Top/Bottom	0	Open		

Ring Configuration		Back Configuration	
1T	TB	Open	

Stock Program

<<<

These articles can be delivered ex stock Wattens.

57 700

Size

S29 IT O

Color/Plating

Crystal Z (001)

Crystal S (001)

Crystal 3 (001)