

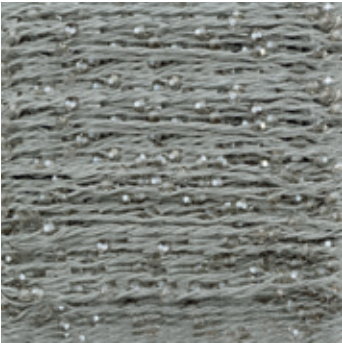


14 CRYSTAL YARN

Crystal Yarn is an outstanding innovation that features Beads pre-threaded onto high-quality yarns. The exciting product opens up many new application possibilities, particularly in the fields of hand- or machine embroidery, knitting, and weaving. It is especially suited to the creation of designs with a very exclusive look. Crystal Yarn is a ready-to-use product available in a large and very diverse assortment that is suitable for all segments.

Article Explanation <<<

59 200



D	01
SS	2 mm (5000)
M	25, 100 M
	100%

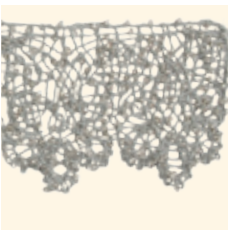
59 200	D	SS	M	100%
Article number	Distance between the crystals	Stone size	Minimum order quantity in meters (M)	Documentation size in %
	This article is available in a distance of 1 cm (approx.).	2 mm for article 5000		

Ordering Example & Product Variety Explanation <<<

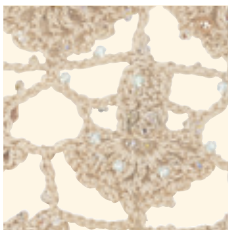
59 200	/01	025	C040	001 SSHA
Article number	2-digit code for approximate distance between the crystals, separated from article number with a slash	Length	Type & color of yarn	Color of crystals
59000 (5328 3 mm)		025 25 m/spool	Type of yarn:	Please see the respective product matrix for all available code references.
59200 (5000 2 mm)		050 50 m/spool	C Cotton	
	/01 1 cm	100 100 m/spool	Color of yarn:	
	/03 3 cm	300 300 m/spool	012 Black	
	/08 8 cm		016 Rose Water Opal	
			022 White	
			024 Black Diamond	
			032 Caribbean Blue Opal	
			033 Copper	
			035 Cream	
			036 Golden Shadow	
			040 Silver Shade	

Application Examples <<<

Crystal Yarn opens up many new application possibilities, particularly in the fields of embroidery and knitting, and is especially suited to the creation of designs with a very exclusive look. Please find herein some examples of the different possible looks of Crystal Yarn.



Lace



Crochet

Available Yarn & Crystal Colors

<<<

Crystal Yarn is available in 14 tone-on-tone configurations. Please see the respective product matrix for all available options.

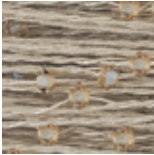
Cotton Versions – 3 mm



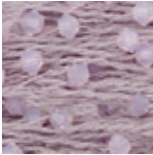
C022 001
White yarn &
Crystal Beads



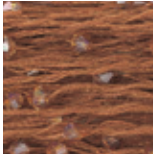
C035 001 AB
Cream yarn &
Crystal Aurore
Boreale Beads



C036 001 GSHA
Golden Shadow
yarn & Beads



C016 395
Rose Water Opal
yarn & Beads



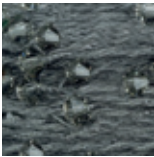
C033 001 COP
Copper yarn &
Beads



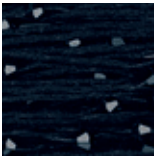
C032 394
Caribbean Blue
Opal yarn & Beads



C040 001 SSHA
Silver Shade yarn
& Beads



C024 215
Black Diamond
yarn & Beads



C012 280
Black yarn &
Jet Beads

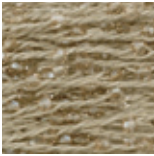
Cotton Versions – 2 mm



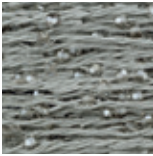
C022 001
White yarn &
Crystal Beads



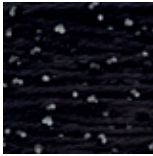
C035 001 AB
Cream yarn &
Crystal Aurore
Boreale Beads



C036 001 GSHA
Golden Shadow
yarn & Beads



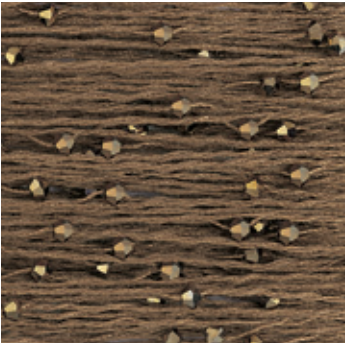
C040 001 SSHA
Silver Shade yarn
& Beads




C012 280
Black yarn &
Jet Beads

Crystal Yarn

59 000 Cotton Versions*








Color	
	Crystal (001)
	Crystal AB (001 AB)
	Crystal Copper (001 COP)
	Crystal Golden Shadow (001 GSHA)
	Crystal Silver Shade (001 SSHA)
	Jet (280)
	Black Diamond (215)
	Caribbean Blue Opal (394)
	Rose Water Opal (395)

Color of Yarn	
C012 Cotton Black	
C016 Cotton Rose Water Opal	
C022 Cotton White	
C024 Cotton Black Diamond	
C032 Cotton Caribbean Blue Opal	
C033 Cotton Copper	
C035 Cotton Cream	
C036 Cotton Golden Shadow	
C040 Cotton Silver Shade	
Distance	
3 cm	
8 cm	

59 200**



Color	
	Crystal (001)
	Crystal AB (001 AB)
	Crystal Golden Shadow (001 GSHA)
	Crystal Silver Shade (001 SSHA)
	Jet (280)

Color of Yarn	
C012 Cotton Black	
C022 Cotton White	
C035 Cotton Cream	
C036 Cotton Golden Shadow	
C040 Cotton Silver Shade	
Distance	
1 cm	

* Available on 50 m & 300 m spool
** Available on 25 m & 100 m spool

Product Composition & Technical Data

<<<

Type of Yarn	Cotton
59000	4 ply 100% Cotton
59200	

Number of Beads per meter

3 cm distance	~ 34 pcs
8 cm distance	~ 14 pcs
1 cm distance	~ 125 pcs

Indicative Fastness

Washing at 30°C	4
Light	3/4
Dry cleaning	4/5

Average Weight (m/kg)

59000/03	900
/08	1,550
59200/01	590

Hints and Tips

<<<

- The Beads may slip off at the beginning and the end of the Crystal Yarn.
- Some Beads may unavoidably be damaged during the embroidery process.
- Slight variations in the color of the yarn may occur among different dyeing lots. Those lie within a range of tolerance.
- One cotton version (Color Cream) may be dyed, however, this definitely must be tested before production!
- Claims may be lodged for replacements up to 50 m. These claims are not valid for finished products.

Quality Standards

<<<

Crystal Yarn complies with Swarovski's high quality standards that allow our customers to gain a market edge. This guaranteed quality corresponds to your high design requirements and contributes to the exclusivity of your products. Crystal Yarn is resistant to: light, seawater, perspiration, perfume, perchloroethylene, weak acid and alkaline solutions. The product is certified with Oeko-Tex Standard 100. It could appear that there are knots in the Crystal Yarn.